

BAR HANDLES HOLLOW SS



- **H12 Hollow Stainless Steel Bar Handles**
Diameter 12mm Height 32mm
Brushed Stainless Steel or Matt Black
Finishes

Centre to Centre Sizes

96mm	R4.75/R5.46
128mm	R4.85/R5.58
160mm	R4.95/R5.69
192mm	R5.05/R5.81
224mm	R5.15/R5.92
256mm	R6.50/R7.45
288mm	R7.50/R8.63
320mm	R7.95/R9.14

PULL-OUT STORAGE BASKETS



Chrome Plated
or Matt Black

- **ML007B ●ML007B-BK**
for 400mm Width Cabinet
Basket Width with Bracket 364mm
R200.00/R230.00
- **ML007C ●ML007C-BK**
for 450mm Width Cabinet
Basket Width with Bracket 414mm
R210.00/R241.50
- **ML007D ●ML007D-BK**
for 500mm Width Cabinet
Basket Width with Bracket 464mm
R220.00/R253.00
- **ML007E ●ML007E-BK**
for 600mm Width Cabinet
Basket Width with Bracket 564mm
R230.00/R264.50

ALUMINIUM TUBING



●08LC

Elliptical Oval Aluminium Tubing
35mm x 20mm

- 2.25m Length R 49.50/R 56.93
- 2.40m Length R 59.50/R 68.43
- 3.00m Length R 76.50/R 87.98
- 5.00m Length R123.50/R142.03

BALL BEARING SLIDES Height 35mm

Zinc Plated or Black

Minimum Order 20 Pairs



●35E ECONO VERSION

0.7mm Steel Thickness

- 35250E L250mm R 9.95/R11.44
- 35300E L300mm R11.95/R13.74
- 35350E L350mm R16.10/R18.52
- 35400E L400mm R19.30/R22.20

●35H ECONO PLUS VERSION

0.8mm Steel Thickness

- 35250H L250mm R12.95/R14.89
- 35300H L300mm R15.15/R17.42
- 35350H L350mm R16.70/R19.21
- 35400H L400mm R18.65/R21.45
- 35450H L450mm R20.70/R23.81
- 35500H L500mm R23.65/R27.20

BALL BEARING SLIDES Height 42mm

Zinc Plated

Minimum Order 15 Pairs



●42E ECONO VERSION

0.7mm Steel Thickness

- 42300E L300mm R16.35/R18.80
- 42350E L350mm R17.95/R20.64

●42 ECONO PLUS VERSION

0.8mm Steel Thickness

- 42350 L350mm R18.35/R21.10
- 42400 L400mm R20.55/R23.63
- 42450 L450mm R23.50/R27.03

●42 STANDARD VERSION

0.9mm Steel Thickness

- 42500 L500mm R29.05/R33.41

BALL BEARING SLIDES Height 45mm

Zinc Plated

Minimum Order 15 Pairs



●45H ECONO PLUS VERSION

0.9mm Steel Thickness

- 45250H L250mm R18.95/R21.79
- 45300H L300mm R22.95/R26.39
- 45350H L350mm R28.95/R33.29
- 45400H L400mm R31.95/R36.74
- 45450H L450mm R33.95/R39.04
- 45500H L500mm R37.95/R43.64

●45E STANDARD VERSION

1.0mm Steel Thickness

- 45250E L250mm R19.95/R22.94
- 45300E L300mm R23.95/R27.54
- 45350E L350mm R29.95/R34.44
- 45400E L400mm R32.95/R37.89
- 45450E L450mm R34.95/R40.19
- 45500E L500mm R48.95/R56.29
- 45550E L550mm R49.95/R57.44

●45 DELUXE VERSION

1.2mm Steel Thickness

- 45300 L300mm R32.95/R37.89
- 45350 L350mm R33.95/R39.04
- 45400 L400mm R35.95/R41.34
- 45450 L450mm R36.95/R42.49
- 45500 L500mm R50.95/R58.59
- 45550 L550mm R51.95/R59.74
- 45600 L600mm R53.95/R62.04
- 45700 L700mm R63.95/R73.54
- 45800 L800mm R79.95/R91.94
- 45900 L900mm R81.95/R94.24

BOTTOM MOUNTED DRAWER SLIDES



●689 SERIES

0.9mm Steel Thickness

White or Brown

Length

- 250mm R 9.60/R11.04

White, Brown or Black

Lengths

- 300mm R10.60/R12.19
- 350mm R13.75/R15.81
- 400mm R15.70/R18.06
- 450mm R16.00/R18.40
- 500mm R16.30/R18.75

White or Black

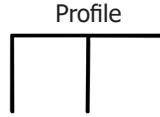
Length

- 550mm R19.90/R22.89

Top Track (Code TT)



Matt Chrome
R250.00/R287.50
R340.00/R391.00
R435.00/R500.25



Profile
Length 2.25m
Length 3.00m
Length 4.00m



Matt Black
R260.00/R299.00
R360.00/R414.00
R450.00/R517.50

Bottom Track (Code BT)



Matt Chrome
R 95.00/R109.25
R130.00/R149.50
R165.00/R189.75



Profile
Length 2.25m
Length 3.00m
Length 4.00m

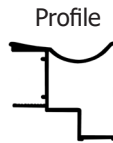


Matt Black
R100.00/R115.00
R135.00/R155.25
R170.00/R195.50

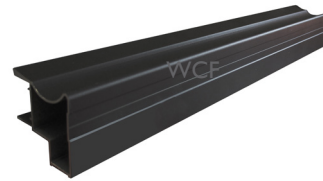
Vertical Handle Profile (Code VP)



Matt Chrome
R150.00/R172.50



Profile
Length 2.70m



Matt Black
R154.00/R177.10

Note: These VP Profiles are not sold alone, but only in conjunction with Top and Bottom Tracks.

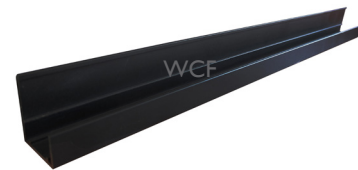
Horizontal Profile (Code HP)



Matt Chrome
R52.00/R 59.80
R71.00/R 81.65
R91.00/R104.65



Profile
Length 2.25m
Length 3.00m
Length 4.00m



Matt Black
R56.00/R 64.40
R75.00/R 86.25
R94.00/R108.10

For Matt Chrome Track (Code Item5.1)



Top



Bottom

Fittings

2 x Top and 2 x Bottom
Fittings for the Sliding Door Wheel Sets
One set required per Door
Matt Chrome or Matt Black
R 65.00/R 74.50

For Matt Black Track (Code Item5.1-AN)



Top



Bottom

WCF

WHOLESALE CABINET FITTINGS (PTY) LTD

Handles, Cabinet Hardware and Furniture Fittings

HINGE SPECIALS

EFFECTIVE 4 MAY - 30 MAY 2026

(Price exclusive/*inclusive* of VAT)



•**9748-N** (Weight 52gm)
Hinges with 4-Hole Plate
Full Overlay
R2.25/R2.59 each



•**1848** (Weight 74gm)
Hinges with Integrated 4-Hole Plate
Soft Close. Full Overlay
R4.95/R5.69 each



•**GWQ-F** (Weight 54gm)
Hinges with 4-Hole Plate
Full Overlay
R2.45/R2.82 each



•**HB165**
Hinge with 4-Hole Plate
165° Soft Close
Full Overlay
R18.95/R21.79 each



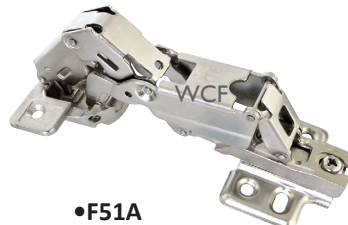
•**HB45**
Hinge with 4-Hole Plate
45° Soft Close
R7.95/R9.14 each



•**HB90**
Hinge with 4-Hole Plate
90° Soft Close
Blind Corner
R9.95/R11.44 each



•**F46**
Hinge with Slide-on 4-Hole Plate
45°
R4.95/R5.69 each



•**F51A**
Hinge with Slide-on 4-Hole Plate
Zinc Cup 165°
Full Overlay
R16.95/R19.49 each



•**1648**
Hinge with Clip-on 4-Hole Plate
45°
R5.95/R6.84 each



•**20011**
3 Knuckle Hinges (H 70 x W 45mm)
Brass Plated, Chrome Plated, Antique Brass, Antique Copper, White or Black
(Packed in pairs with Screws)
R7.95/R9.14 per Pair

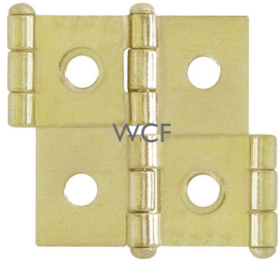
WCF[®]

HINGE SPECIALS

WHILE STOCKS LAST!

WHOLESALE CABINET FITTINGS (PTY) LTD
Handles, Cabinet Hardware and Furniture Fittings

EFFECTIVE 4 MAY - 30 JUNE 2026
(Price exclusive/inclusive of VAT)



●20861BP

Folding Screen Door Hinges
H 44 x W 52mm x T 1.2mm
Brass Plated
R3.95/R4.54 each



●22903

Flap Hinge - Drill 35mm
Brown/Brass Plated, Brown/Antique Brass or Brown/Nickel Plated
R3.95/R4.54 each



●31064

T 1.2 x L 64mm
Brass Plated or Antique Copper
R4.70/R5.41 each



●31055

T 1.0 x L 55mm
Antique Brass, Nickel Plated or Unfinished
R2.60/R2.95 each



●LA8ZP

T 1.0 x L 55mm
Zinc Plated
R4.65/R5.35 each



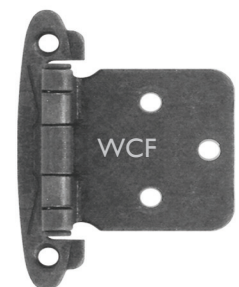
●3431BP

Flap - L 78 x W 30mm T 1.8mm
Brass Plated Steel
R9.85/R11.33 each



●20011BP

3 Knuckle Hinges
H 70 x W 45mm
Brass Plated
(Packed in pairs with Screws)
R7.95/R9.14 per pair



●20020AP

5 Knuckle
H 70 x W 49mm
Antique Pewter
(Packed in pairs with Screws
and Bumper Pads)
R3.95/R4.54 per pair

23 Roper Str,
New Centre,
JOHANNESBURG
Tel: 011 493 1222
☎ 067 363 0962

466 Jasmyn Str,
Silverton,
PRETORIA
Tel: 012 804 1832
☎ 072 138 0827

Unit 7 Saligna Park,
3 Saligna Str,
Witfield, BOKSBURG
Tel: 011 823 1873
☎ 072 078 0001

Unit 6 Skyview Retail Park,
Cnr CR Swart & Freda Dr,
Strydom Park, RANDBURG
Tel: 011 791 5393
☎ 072 360 5858

Unit 6 Cecil Morgan Str,
Stikland,
CAPE TOWN
Tel: 021 949 1827
☎ 072 916 0860

Unit 6 Motor City,
Cnr. 6th Street & Rautenbach Ave.,
Wynberg, SANDTON
Tel: 011 462 6870
☎ 079 024 7246

www.cabinetfittings.co.za

E-mail: sales@cabinetfittings.co.za

WCF

HANDLE & KNOB SPECIALS

WHOLESALE CABINET FITTINGS
Handles, Cabinet Hardware and Furniture Fittings

EFFECTIVE 4 MAY TILL 30 JUNE 2026
(Price exclusive/inclusive of VAT Each)



•**4644-47 Zinc**

Chrome Plated, Brushed Nickel
or Black Nickel Finishes

96mm	R11.95/R13.74
128mm	R15.95/R18.34
160mm	R23.95/R27.54
192mm	R29.95/R34.44



•**2204 Hollow Stainless Steel**

Bar Size 20 x 10mm Height 35mm
Brushed Stainless Steel or Matt Black
Finishes

96mm	R16.95/R19.49
128mm	R17.95/R20.64
160mm	R18.95/R21.79
192mm	R19.95/R22.94
224mm	R22.95/R26.39
256mm	R23.95/R27.54
288mm	R24.95/R28.69
320mm	R25.95/R29.84
416mm	R35.95/R41.34
512mm	R39.95/R45.94
Brushed Stainless Steel Finish	
352mm	R32.95/R37.89
384mm	R33.95/R39.04
448mm	R41.95/R48.24
480mm	R42.95/R49.39
Brushed Gold Finish	
96mm	R16.95/R19.49
128mm	R18.95/R21.79
160mm	R21.95/R25.24
192mm	R22.95/R26.39
256mm	R23.95/R27.54
320mm	R26.95/R30.95



•**58587 Hollow Stainless Steel**

Bar Size 12 x 12mm Height 35mm
Brushed Stainless Steel or Matt Black Finishes

96mm	R12.95/R14.89
128mm	R13.95/R16.04
160mm	R16.95/R19.49
192mm	R17.95/R20.64
224mm	R18.95/R21.79
256mm	R19.95/R22.94
288mm	R21.95/R25.24
320mm	R22.95/R26.39
384mm	R26.95/R30.95
Brushed Stainless Steel Finish	
352mm	R29.95/R34.44
448mm	R31.95/R36.74
480mm	R32.95/R37.89
Brushed Gold Finish	
96mm	R14.95/R17.19
128mm	R15.95/R18.34
160mm	R18.95/R21.79
192mm	R19.95/R22.94
256mm	R21.95/R25.24
320mm	R23.95/R27.54



•**ROMAN-12 Hollow Stainless Steel Bar**

Diameter 12mm Brushed Stainless Steel
or Black Finishes

128mm	R21.95/R25.24
160mm	R23.95/R27.54
192mm	R26.95/R30.99
224mm	R27.95/R32.14
256mm	R28.95/R33.29
288mm	R29.95/R34.44
320mm	R31.95/R36.74
352mm	R34.95/R40.19

•**ROMAN-14 Hollow Stainless Steel Bar**

Diameter 14mm Brushed Stainless Steel Finish

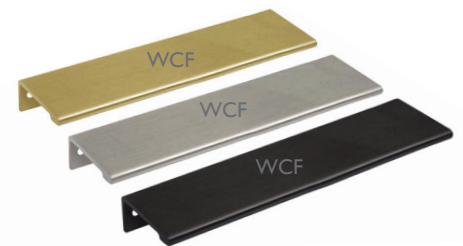
128mm	R22.95/R26.39
160mm	R24.95/R28.69
192mm	R27.95/R32.14
224mm	R28.95/R33.29
256mm	R29.95/R34.44
288mm	R30.95/R35.59
320mm	R32.95/R37.89
352mm	R35.95/R41.34
384mm	R38.95/R44.79
416mm	R39.95/R45.94
448mm	R40.95/R47.09
480mm	R41.95/R48.24



•**713 Aluminium**

Chrome Plated, Brushed Nickel
or Matt Black Finishes

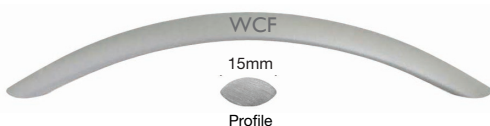
128mm	R19.95/R22.94
160mm	R22.95/R26.39
192mm	R25.95/R29.84
224mm	R28.95/R33.29
256mm	R31.95/R36.74
320mm	R38.95/R44.79



•**041 Aluminium**

Brushed Gold or Matt Black Finishes

96mm	R10.95/R12.59
128mm	R12.95/R14.89
160mm	R14.45/R16.61
192mm	R17.20/R19.78
224mm	R19.35/R22.25
256mm	R21.30/R24.50
288mm	R33.50/R38.53



•**H465 Aluminium**

Matt Black, Gloss Black, Matt Chrome,
Brushed Nickel, Gun Blue, Satin Gold or
Silver Vein Finishes

96mm	R11.95/R13.74
Matt Chrome, Brushed Nickel	
or Matt Black Finishes	
128mm	R12.95/R14.89
160mm	R16.95/R19.49
192mm	R17.95/R20.64
224mm	R22.95/R26.39



•**2858 Aluminium Knobs**

Chrome Plated, Matt Chrome,
Brushed Nickel or Black Finishes

D15mm	R 7.95/R 9.14
D20mm	R 9.95/R11.44
D25mm	R14.95/R17.19

Brushed Nickel Finish

96mm	R23.05/R26.51
128mm	R27.90/R32.09
160mm	R32.00/R36.80
192mm	R38.10/R43.82
224mm	R43.30/R49.80
256mm	R44.95/R51.69
288mm	R53.40/R61.41



•149 Zinc

Height 27mm Width 8mm

Brushed Nickel or Black Nickel Finishes

96mm R19.95/R22.94

256mm R39.95/R45.94

Matt Chrome, Brushed Nickel, Black Nickel or Matt Black Finishes

128mm R21.95/R25.24

160mm R27.95/R31.14

192mm R28.95/R33.29

Matt Chrome, Brushed Nickel or Black Nickel Finishes

224mm R37.95/R43.64

Brushed Nickel Finish

320mm R49.95/R57.44



•149 Aluminium

Height 27mm Width 8mm

Brushed Gold Finish

96mm R17.95/R20.64

128mm R19.95/R22.94

160mm R20.95/R24.09

192mm R23.95/R27.54

224mm R25.95/R29.84

256mm R30.95/R35.59

320mm R38.95/R44.79



•149 Aluminium

Height 27mm Width 8mm

Chrome Plated, Matt Chrome, Brushed or Matt Black Finishes

96mm R14.95/R17.19

128mm R16.95/R19.49

160mm R19.95/R22.94

192mm R21.95/R25.24

224mm R23.95/R27.54

256mm R26.95/R30.95

320mm R29.95/R34.44

Black Nickel Finish

128mm R16.95/R19.49

160mm R19.95/R22.94

192mm R21.95/R25.24



•K283 Zinc

Diameter 25mm

Brass Plated, Chrome Plated, Matt Chrome, Black Nickel, Brushed Nickel, Antique Brass or Antique Iron Finishes

R8.95/R10.29



•A113 Zinc

Diameter 30mm

Chrome Plated, Matt Chrome, Black Nickel, Brushed Nickel, Satin Nickel or Satin Brass Finishes

R13.95/R16.04



•0029 Zinc

Diameter 20mm

Brass Plated, Chrome Plated, Matt Chrome, Black Nickel or Brushed Nickel Finishes

R9.95/R11.44



•0057 Zinc

Diameter 23mm

Brass Plated, Chrome Plated, Matt Chrome, Black Nickel or Brushed Nickel Finishes

R9.95/R11.44



•8001 Zinc

Brass Plated, Chrome Plated, Brushed Nickel, Matt Chrome, Antique Brass, Antique Pewter or Matt Black Finishes

Centre to Centre Size 64mm R14.95/R17.19

•88407 Zinc

Antique Brass, Antique Pewter, Antique English, Matt Black, Brushed Nickel or Unfinished

Centre to Centre Size 64mm R13.95/R16.04

WCF[®]

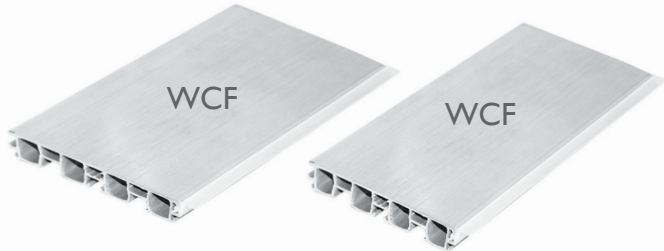
WHOLESALE CABINET FITTINGS (PTY) LTD
Handles, Cabinet Hardware and Furniture Fittings

KITCHEN PLINTH PANELS SPECIALS

WHILE STOCKS LAST!

EFFECTIVE 4 MAY - 30 JUNE 2026
(Price exclusive/inclusive of VAT)

STAINLESS STEEL FINISH



L 4.0m x Ht 150mm

R156.00/R179.40

L 4.0m x Ht 100mm

R 90.00/R103.50

L 3.6m x Ht 150mm

R145.00/R166.75

L 3.6m x Ht 100mm

R 85.00/R 97.95



90 Degree Corners (Each)

Length 150mm

R7.95/R9.14

Length 100mm

R4.95/R5.69



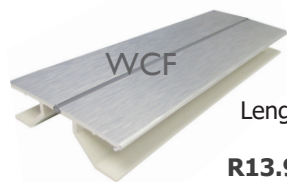
In-Line Joiners (Each)

Length 150mm

R7.95/R9.14

Length 100mm

R4.95/R5.69



Adjustable Corners (Each)

Length 150mm

R13.95/R16.04

Length 100mm

R8.95/R10.29



Clip for Plastic Plinth
R1.25/R1.44 each



Single Adjustable Height
Legs without Clips
Height 150 to 180mm

R4.50/R5.18 each

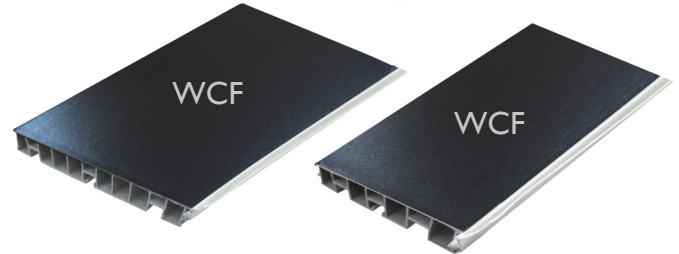
Height 100 to 130mm

R2.95/R3.39 each



Adjustable Height Legs
(For Plastic Plinths Only)
4 Legs & 4 Plinth Clips per Set
Height 150 to 180mm

R14.95/R17.19 per set



L 4.0m x Ht 150mm

R140.00/R161.00

L 4.0m x Ht 100mm

R100.00/R115.00



90 Degree Corners (Each)

Length 150mm

R5.95/R6.84

Length 100mm

R3.95/R4.54



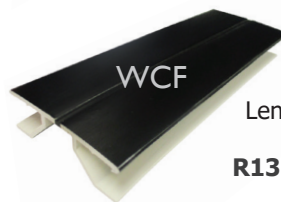
In-Line Joiners (Each)

Length 150mm

R4.95/R5.69

Length 100mm

R2.95/R3.39



Adjustable Corners (Each)

Length 150mm

R13.95/R16.04

Length 100mm

R8.95/R10.29



Swivel Clip for Plastic Plinth
R1.00/R1.15 each



Adjustable Height Legs
(For Wooden or Plastic Plinths)
4 Legs & 4 Plinth Clips per Set
Height 150 to 180mm

R15.95/R18.34 per set



Height 100 to 130mm

R11.95/R13.74 per set

23 Roper Str,
New Centre,
JOHANNESBURG
Tel: 011 493 1222
☎ 067 363 0962

466 Jasmyn Str,
Silverton,
PRETORIA
Tel: 012 804 1832
☎ 072 138 0827

Unit 7 Saligna Park,
3 Saligna Str,
WITFIELD, BOKSBURG
Tel: 011 823 1873
☎ 072 078 0001

Unit 6 Skyview Retail Park,
Cnr CR Swart & Freda Dr,
STRYDOM PARK, RANDBURG
Tel: 011 791 5393
☎ 072 360 5858

Unit 6 Cecil Morgan Str,
Stikland,
CAPE TOWN
Tel: 021 949 1827
☎ 072 916 0860

Unit 6 Motor City,
Cnr. 6th Street & Rautenbach Ave.,
WYNBERG, SANDTON
Tel: 011 462 6870
☎ 079 024 7246

www.cabinetfittings.co.za

E-mail: sales@cabinetfittings.co.za

SOLID BRASS



•1786

Wheel Diameter - 32mm
Aperture - D 31 - 24mm
Overall height - 64mm
Chrome Plated Brass
R68.14/R78.36

TRANSPARENT WHEELS



•TPL-75

Wheel D75mm
with Top Plate
R32.04/R36.85

SLIM-LINE WHEEL WITH TOP PLATE



•51217

Wheel D75mm
R16.69/R19.19

TWIN WHEEL 'ORBIT'



•CA-50

Wheel D50mm
with Top Plate
Black
R2.71/R3.12



•OC-50

Wheel D50mm
with M8 Thread
Black
R2.73/R3.14

U-CHANNEL TWIN WHEEL



•27934

Wheel D40mm with 16mm
Width U-Channel
R3.18/R3.66

TWIN WHEEL 'GOLF-BALL'



•CA-GB

Wheel D40mm with Top Plate
Black or Brown
R1.50/R1.73



TWIN WHEEL CASTORS



•DOK12

H105mm Wheel D80mm
with Top Plate
R14.91/R17.15



•DOK17

H115mm Wheel D80mm
with Top Plate
R16.57/R19.06

TWIN WHEEL WITH TOP PLATE



•53016

Wheel D60mm
Nylon
R12.43/R14.29



•53013

Wheel D30mm
Polyprop
R3.76/R4.32



•53415

With Brake
Wheel D50mm
Nylon
R12.55/R14.43



•53414

With Brake
Wheel D40mm
Nylon
R5.85/R6.73

BALL



•51215B

Wheel D 50mm
with Top Plate
R17.26/R19.85

WCF[®] CABINET LEGS SPECIALS

WHOLESALE CABINET FITTINGS (PTY) LTD
Handles, Cabinet Hardware and Furniture Fittings

EFFECTIVE 4 MAY 2026 - 30 JUNE 2026

(Price exclusive/inclusive of VAT)



•RL (D30mm)

Height Adjustable

Matt Chrome, Black Nickel, Brushed Nickel, Satin Nickel or Matt Black

Heights

100mm R13.95/R16.04

150mm R17.95/R20.64



•SL (25 x 25mm)

Height Adjustable

Brushed Nickel, Black Nickel, Matt Black or Satin Nickel Finishes

Heights

100mm R14.95/R17.19

150mm R17.95/R20.64



•TB061 (38mm x 38mm)

Height Adjustable

Brushed Satin, Matt Black
or Brushed Gold Finish

Heights

50mm R10.95/R12.59

100mm R14.95/R17.19

150mm R18.95/R21.79



•IRIS

Matt Chrome Finish

Heights

100mm R29.95/R34.44

130mm R30.95/R35.59

150mm R38.95/R44.79

Chrome Plated Finish

Heights

100mm R24.95/R28.69

130mm R26.95/R30.99

150mm R28.95/R33.29

Matt Black Finish

Heights

100mm R12.95/R14.89

130mm R14.95/R17.19

150mm R16.95/R19.49



•L50 (D 50mm)

Chrome Plated, Matt Chrome, Satin Nickel or Brushed Nickel Finishes

Heights

100mm R39.95/R45.94

150mm R49.95/R57.44



•0801 (D 50mm)

Brushed Nickel Finish

Heights

50mm R10.95/R12.59

100mm R11.95/R13.74

150mm R16.95/R19.49



•0801 CP (D 50mm)

Chrome Plated Finish

Height

100mm R8.95/R10.29



•05 (D 50mm) Height Adjustable

Brushed Stainless Steel

or Matt Black Finishes

Heights

50mm R 7.95/R 9.14

60mm R 9.95/R11.44

80mm R10.95/R12.59

100mm R11.95/R13.74

120mm R12.95/R14.89

150mm R13.95/R16.04

Brushed Gold Finish

Heights

50mm R 9.95/R11.44

60mm R11.95/R13.74

80mm R12.95/R14.89

100mm R14.00/R16.10

120mm R15.95/R18.34

150mm R17.95/R20.64



•L028 (D 50mm)

Height Adjustable

Brushed Nickel or Matt Black Finishes

Heights

60mm R10.95/R12.59

80mm R11.95/R13.74

100mm R11.95/R13.74

120mm R13.95/R16.04

150mm R15.95/R18.34

Matt Chrome Finish

Heights

60mm R11.95/R13.74

80mm R15.95/R18.34

100mm R19.95/R22.94

120mm R21.95/R25.24

150mm R24.95/R28.69

23 Roper Str,
New Centre,
JOHANNESBURG
Tel: 011 493 1222
☎ 067 363 0962

466 Jasmyrn Str,
Silverton,
PRETORIA
Tel: 012 804 1832
☎ 072 138 0827

Unit 7 Saligna Park,
3 Saligna Str,
Witfield, BOKSBURG
Tel: 011 823 1873
☎ 072 078 0001

Unit 6 Skyview Retail Park,
Cnr CR Swart & Freda Dr,
Strydom Park, RANDBURG
Tel: 011 791 5393
☎ 072 360 5858

Unit 6 Cecil Morgan Str,
Stikland,
CAPE TOWN
Tel: 021 949 1827
☎ 072 916 0860

Unit 6 Motor City,
Cnr. 6th Street & Rautenbach Ave.,
Wynberg, SANDTON
Tel: 011 462 6870
☎ 079 024 7246

www.cabinetfittings.co.za

E-mail: sales@cabinetfittings.co.za